

**Edgewater Automation**  
481 Renaissance Drive  
Saint Joseph, MI 49085  
269-983-1300

**Edgewater Automation**

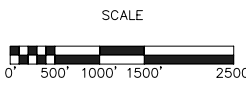
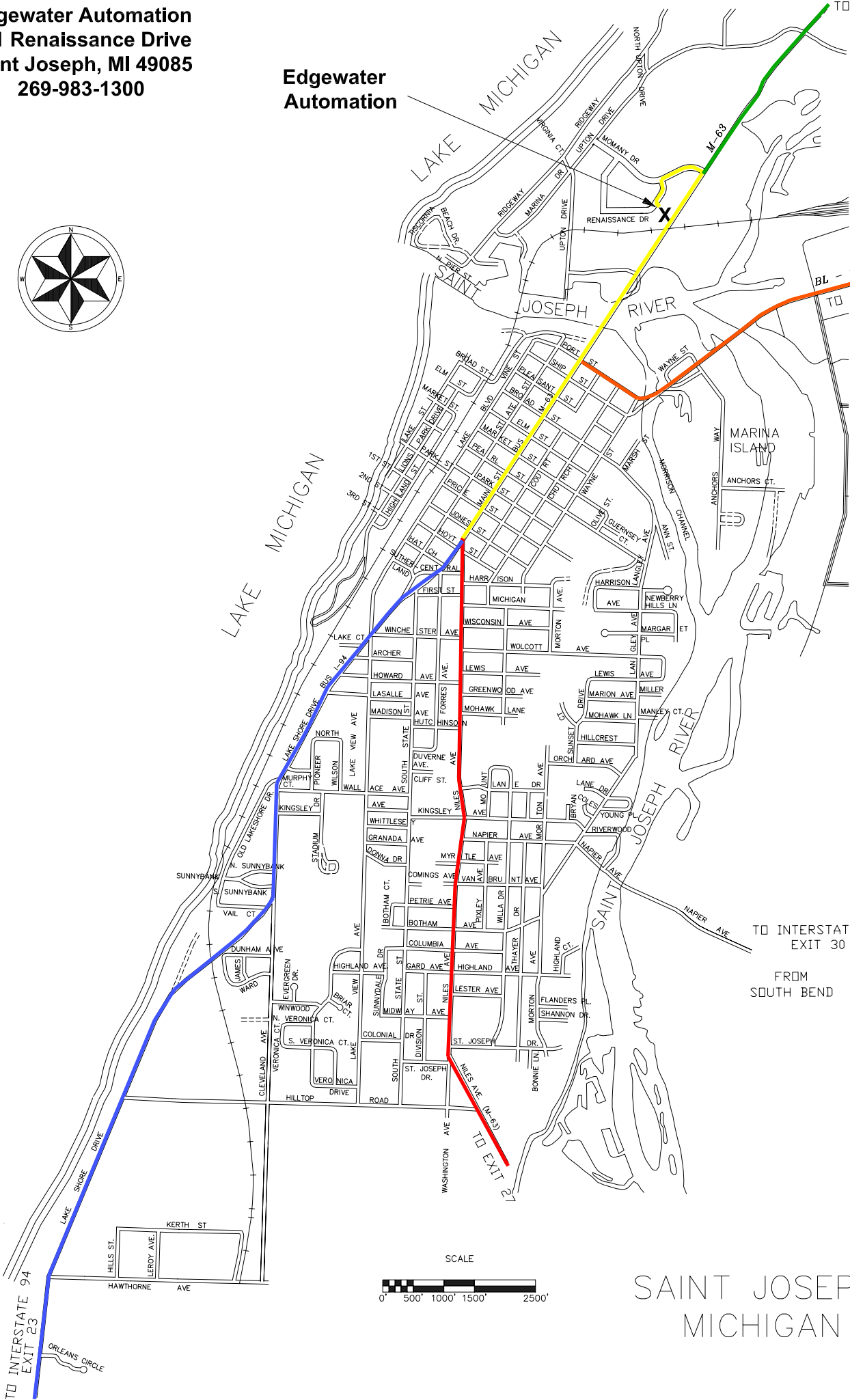


TO INTERSTATE 96  
EXIT 7  
FROM  
GRAND RAPIDS

TO INTERSTATE 94  
EXIT 33  
FROM  
KALAMAZOO

TO INTERSTATE 94  
EXIT 30  
FROM  
SOUTH BEND

FROM  
CHICAGO



SAINT JOSEPH,  
MICHIGAN

*Driving Directions to Edgewater Automation  
481 Renaissance Drive  
Saint Joseph, MI 49085  
269-983-1300*

**From Chicago**

Coming from Chicago on I-94 East, you want to take exit 23 North, which heads toward St. Joseph. From the exit, follow Red Arrow Highway into St. Joseph city limits. Follow Red Arrow Highway (Main Street) thru Saint Joseph and over the bridge and then take a left onto Momany Drive (first road over the bridge). Next, turn left on Renaissance Drive. We are the second building on the left. We are also the only two-story building.

**From Detroit**

Coming from Detroit on I-94 West, you will take exit 33, Business 94. Once on Business 94, you will continue until you come to Main Street in St. Joseph. (You will cross over a long bridge before you come to Main Street.) Take a right on Main Street and go over the bridge and take a left onto Momany Drive (first road over the bridge). Next, turn left on Renaissance Drive. We are the second building on the left. We are also the only two-story building.

**From Kalamazoo**

Coming from Kalamazoo on I-94 West, you will take exit 33, Business 94. Once on Business 94, you will continue until you come to Main Street in St. Joseph. (You will cross over a long bridge before you come to Main Street.) Take a right on Main Street and go over the bridge and take a left onto Momany Drive (first road over the bridge). Next, turn left on Renaissance Drive. We are the second building on the left. We are also the only two-story building.

**From Grand Rapids**

Coming from Grand Rapids on 196 South you will want to take exit 7, turn right of the exit ramp and take an immediate left onto M63 (Blue Star Highway). Follow M63 South for approximately 9 miles. Once the road changes to four lanes, take the first road to the right after the stop light, which is Momany Drive (last road before the bridge over the river). Next, turn left on Renaissance Drive. We are the second building on the left. We are also the only two-story building.

**From South Bend**

Coming from South Bend on US-31 North you will want to take exit 15B, M139 north Saint Joseph/Benton Harbor. You'll stay on this road for about 7 miles. The first stop light will be the intersection with M63. Turn left, which will put you on M63 north. Stay on this road (it curves around a bit); you'll take it through downtown St. Joseph and across the river (about 6.5 miles). We are in the industrial park west of the highway on the north side of the river. After you cross the river, take the first left on Momany Road, and the next left on Renaissance Drive. We are the second building on the left. There are only about 6 buildings in this complex, and we are the only 2-story building.